

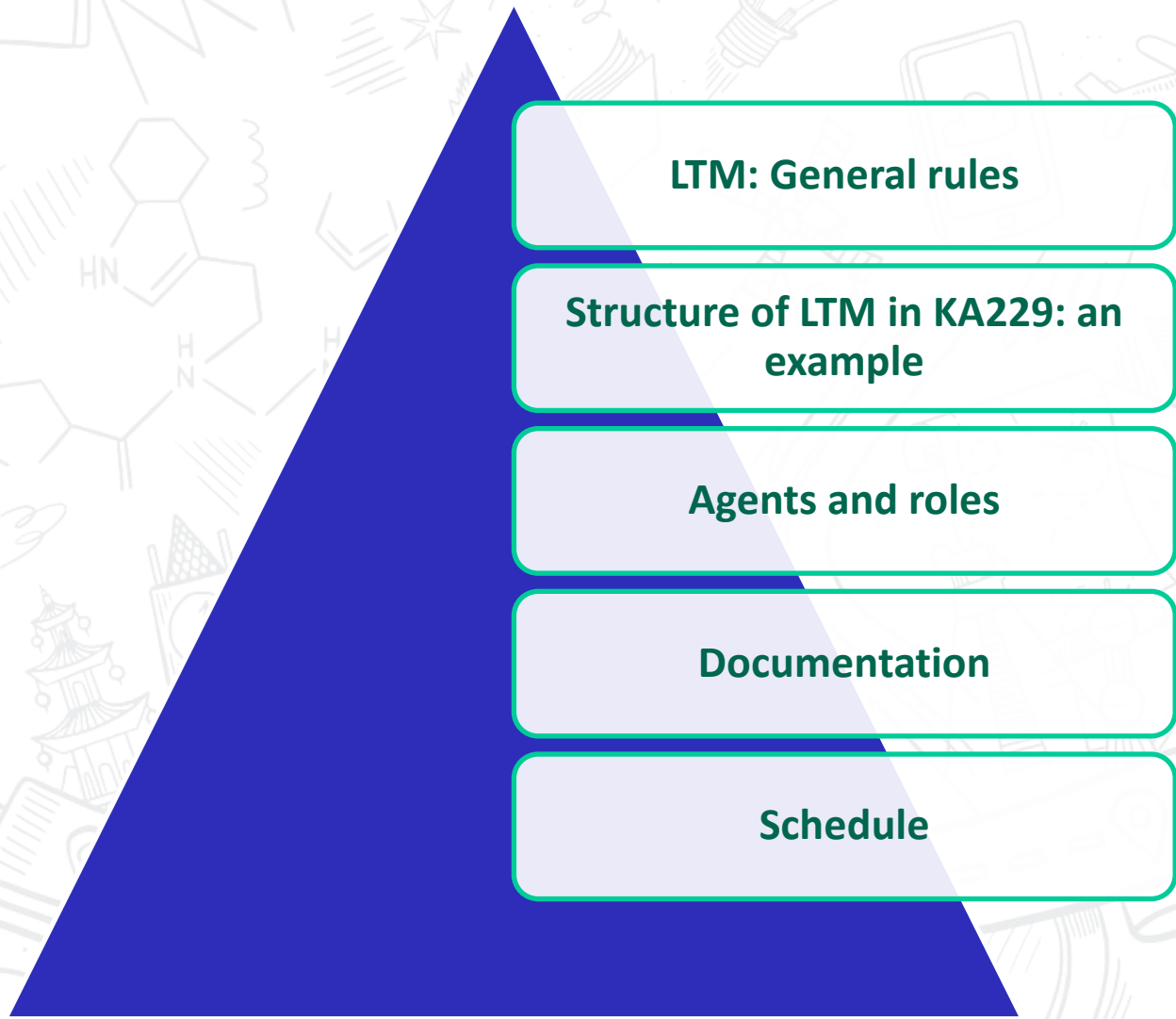
Long-term Study Mobility (LTM) of Pupils in Erasmus+ School Exchange Partnerships KA229

Tenerife, October 2018

2018 
AÑO EUROPEO DEL PATRIMONIO CULTURAL
#EuropeForCulture



SERVICIO ESPAÑOL PARA LA INTERNACIONALIZACIÓN DE LA EDUCACIÓN



KA229 – School Exchange Partnerships

4 types of transnational Learning, teaching and training activities

Short-term exchanges of groups of pupils

- Physical mobility 3 days – 2 months
- Pupils work together

Very common in KA229!

Long-term study mobility of pupils

- Pupils aged 14 or older
- 2 – 12 months
- Schools learning agreements

High impact in schools and pupils!

Short-term joint staff training events

- 3 days – 2 months

Long-term teaching or training assignments

- 2 – 12 months

KA229 – School Exchange Partnerships

4 types of transnational Learning, teaching and training activities

Short-term exchanges of groups of pupils

- Physical mobility 3 days – 2 months
- Pupils work together

Very common in KA229!

Long-term study mobility of pupils

- Pupils aged 14 or older
- 2 – 12 months
- Schools learning agreements

High impact in schools and pupils!

Short-term joint staff training events

- 3 days – 2 months

Long-term teaching or training assignments

- 2 – 12 months

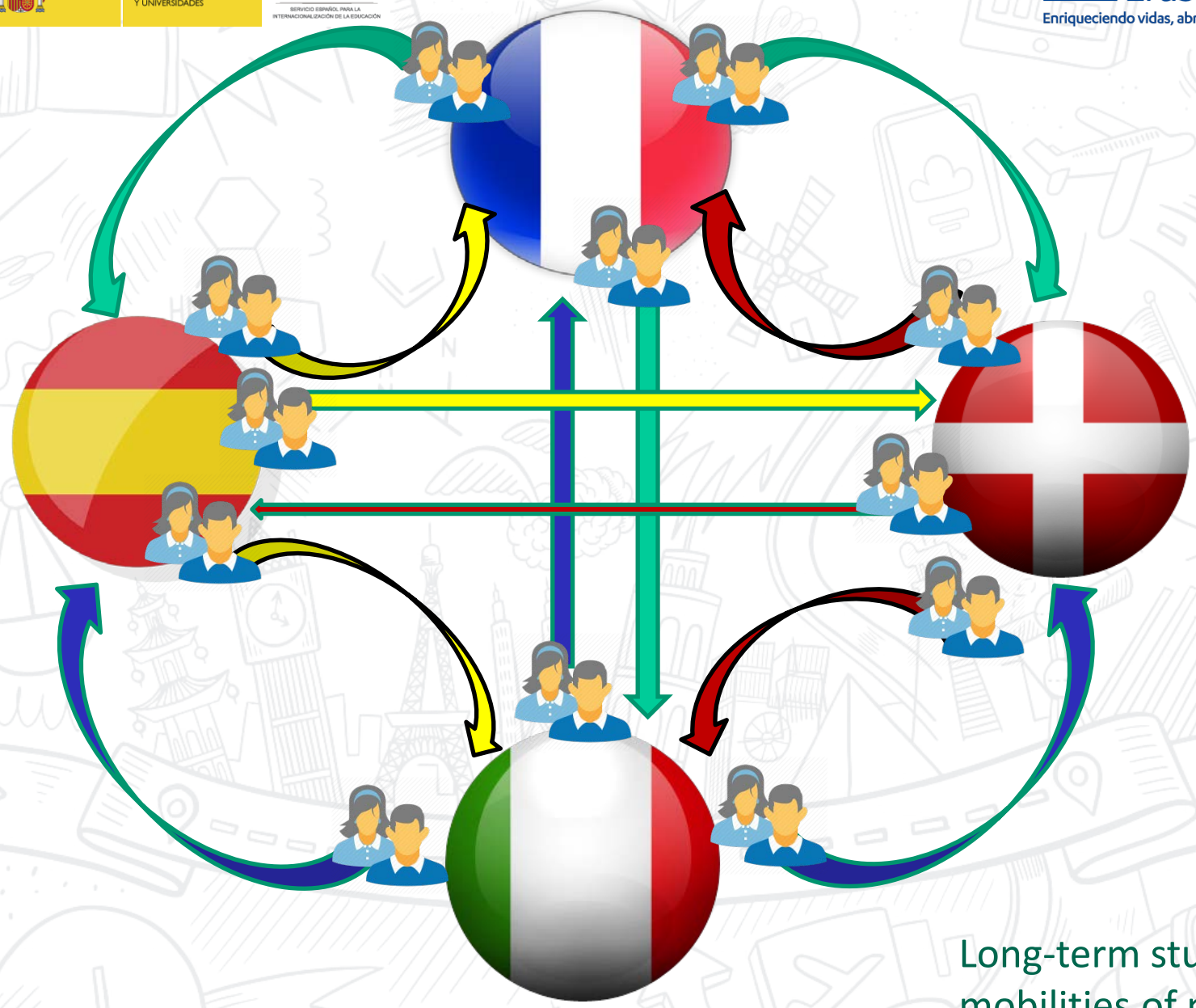
GENERAL RULES

- Minimum age: 14 years old
- Duration of the mobility: 2 to 12 months
- Duration of the Project: 12 to 36 months

KA229 Project - 2019 Call

Coordinator	SPAIN
Partners	DENMARK / FRANCE / ITALY
Priorities	<ul style="list-style-type: none"> • Promoting a comprehensive approach to language teaching and learning • Building capacity for organization and recognition of learning periods abroad
Learning, Teaching and Training Activities	<ul style="list-style-type: none"> • Long-term study mobilities of pupils between all partners • Short-term joint staff training events • Short-term exchanges of groups of pupils • Local activities
Results	<ul style="list-style-type: none"> • Practical guide on organization and recognition of LTM • Resources for linguistic inclusion of foreign pupils
Impact	<p>On the school: internationalization</p> <p>On teachers: new methodologies</p> <p>On pupils: European awareness, new skills, improvement of communication skills, self-growth</p>

SERVICIO ESPAÑOL PARA LA
INTERNACIONALIZACIÓN DE LA EDUCACIÓN



Long-term study
mobilities of pupils



GOBIERNO
DE ESPAÑA

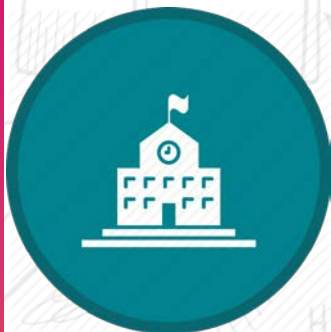
MINISTERIO
DE CIENCIA, INNOVACIÓN
Y UNIVERSIDADES

sepie
SERVICIO ESPAÑOL PARA LA
INTERNACIONALIZACIÓN DE LA EDUCACIÓN



Erasmus+

...vidas, abriendo mentes.



Contact person

CP is the *coordinator* of
the Project (at school
level):

- MT+
- Financial issues
- Reports



LTM Pupils Mentor

In charge of LTM
pupils:

- Selection
- Documents
- Contact with
mentors in receiving
schools
- Host mentor for
incoming pupils



Sending School



Receiving School



Sending Mentor



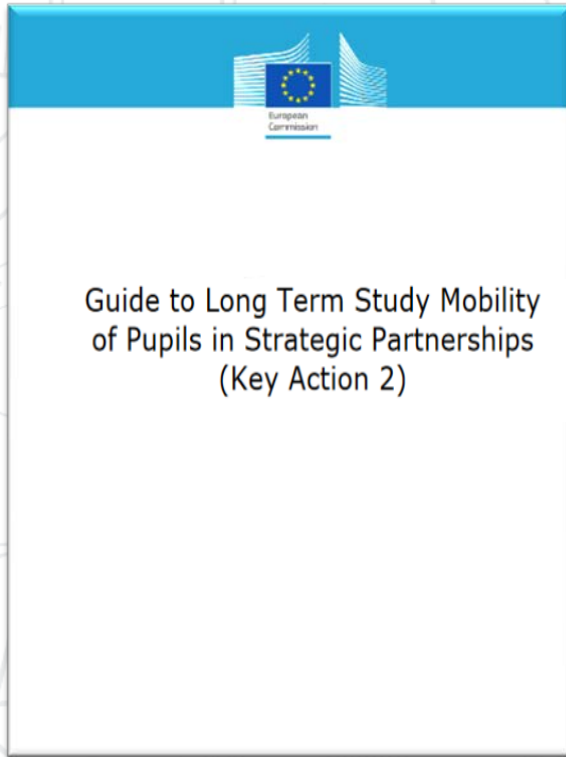
Hosting Mentor



Pupil



Host family





SENDING SCHOOL

Carry out the selection of pupils

Establish a Learning agreement, a Crisis action plan and Rules of conduct together with the receiving school

Make practical arrangements: insurance, travels, transfer money, etc.

Nominate a mentor and ensure that he/she has all necessary resources and the help from colleagues.

Evaluate and recognise the study period abroad.



RECEIVING SCHOOL

Select host families

Establish a learning agreement, Rules of conduct and a Crisis action plan together with the sending school

Provide the host family with necessary information, contacts and documentation

Offers language learning opportunities to the pupil

Nominate a mentor

Provide the mentor/contact teacher with all the necessary means (resources and help from colleagues).



Prepare the pupil for the mobility

Attend the pre-departure training organized by the National Agency

Act as the link between the sending school and the NA, the receiving school, the pupil and his/her parents/guardians (including passing on information and documents)

Communicate regularly with the contact teacher/mentor in the receiving school

Provide support to the pupil to help reintegration into the home community after the stay.

Keep confidential all personal data received in the framework of the mobility activity.



HOST MENTOR

Establish contact with the host family before the pupil arrives

Act as the link between the receiving and the sending school, the pupil and his/her host family and, if necessary, parents/guardians (including passing on information and documents)

Arrange domestic travel to accompany the pupil on arrival and on departure

Introduce the pupil in the school and help him/her adjust to the new school system

Contact parents/legal guardians/contact teacher at sending school if necessary (in emergency)

Carry out the end-of-stay evaluation of the pupil's stay

Assist the sending school with any follow-up or evaluation

PUPIL

Prepare for the stay abroad

Be sensitive to local codes and customs

Not take unnecessary risks

Get to know possible risks

Behave responsibly

**Sign docs:
Pupil application form
& Health form**

**Attend the training
session (NA)**

Keep health form

Sign the learning agreement

Sign the Parental/Guardian consent form

**Contribute to the evaluation and final report
of the mobility activity**





GOBIERNO DE ESPAÑA

MINISTERIO DE CIENCIA, INNOVACIÓN Y UNIVERSIDADES

sepie
SERVICIO ESPAÑOL PARA LA INTERNACIONALIZACIÓN DE LA EDUCACIÓN



Erasmus+

Enriqueciendo vidas, abriendo mentes.

HOST FAMILY

Provide accommodation and food

Facilitate transport to school

Sign the Host family charter

Exert Parental supervision

Get to know Risks and emergency procedures

Help pupil's transition

Emergency documents

Prevent the Culture shock

Pupil's Health form

Child protection requirements

Be familiar with the Crisis action plan

Communication with mentor and schools

Protect Confidentiality



SCHEDULE

Nomination of a contact teacher/ mentor

Selection of pupils (S)

Selection of host families (R)

Information on selected pupils and families

Designing the Learning agreement (S+R+pupil)

Compulsory training sessions (S→NA)

Provision of Insurance (S) and Crisis Action Plan (S+R)





GOBIERNO
DE ESPAÑA

MINISTERIO
DE CIENCIA, INNOVACIÓN
Y UNIVERSIDADES

sepie
SERVICIO ESPAÑOL PARA LA
INTERNACIONALIZACIÓN DE LA EDUCACIÓN



Erasmus+

Enriqueciendo vidas, abriendo mentes.

¡Gracias!

sepie

SERVICIO ESPAÑOL PARA LA
INTERNACIONALIZACIÓN DE LA EDUCACIÓN



www.sepie.es

www.erasmusplus.gob.es

movilidad.escolar@sepie.es

movilidad.adultos@sepie.es

asociaciones.escolar@sepie.es

asociaciones.adultos@sepie.es



 [ErasmusPlusSEPIE](https://www.facebook.com/ErasmusPlusSEPIE)

 [@sepiegob](https://twitter.com/sepiegob)

[#ErasmusPlusES](https://twitter.com/ErasmusPlusES)